

"our get acquainted year"

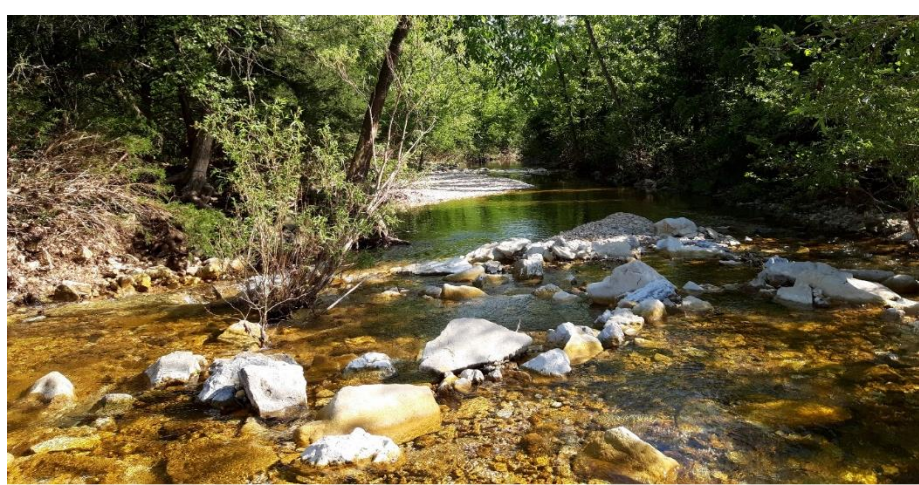


Ozark Mountain State Park



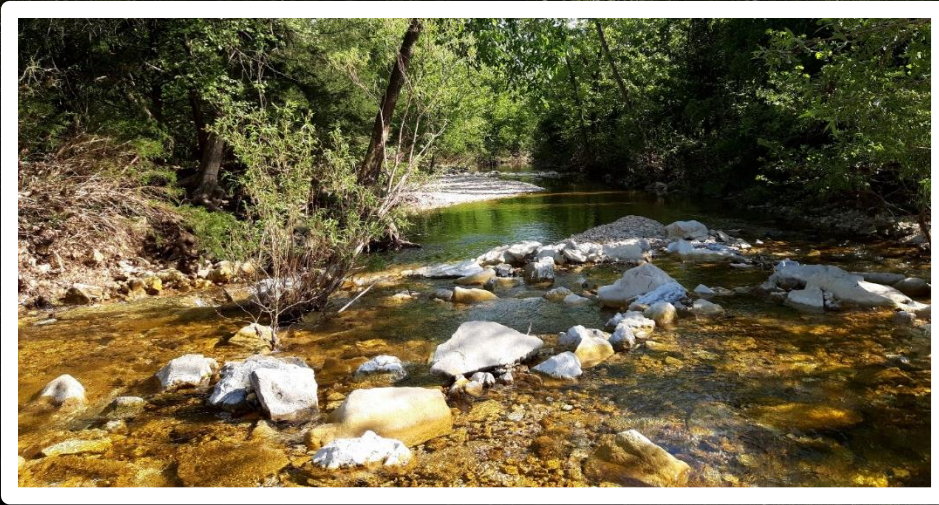
Natural Resource Inventories

- ***Plant Survey***
- ***Natural Community Map***
- ***Breeding Bird Monitoring Plots***
- ***Native Bee Survey***
- ***Native Plant monitoring Plots***



Natural Resource Inventories

- ***Water quality monitoring***
- ***Aquatic survey***
- ***Detailed geology survey***



- ***Plant Survey***
- ***Natural Community Map***
- ***Breeding Bird Monitoring Plots***
- ***Native Bee Survey***
- ***Native Plant monitoring Plots***

Highlights

- **742 plant species**
(7 rare species)
(18% are exotic weeds)
- **53 breeding bird species**
(eg roadrunner, prairie warbler,
wood pewee, fish crow and kestrel)
- **400 acres of glade**
- **2.2 miles of Roark Creek**
- **5 tributary streams**





***Natural Resource
Purpose ...***

***“protect and improve quality and aquatic resources in Roark
Creek, by preserving a signature natural glade-woodland
environment in its watershed”***

Objectives ...

- *Protect water quality and aquatic life in Roark Creek*
- *Preserve the birds, wildlife and plants*
- *Rehabilitate the woodlands and glades*

Natural Resource Purpose ...

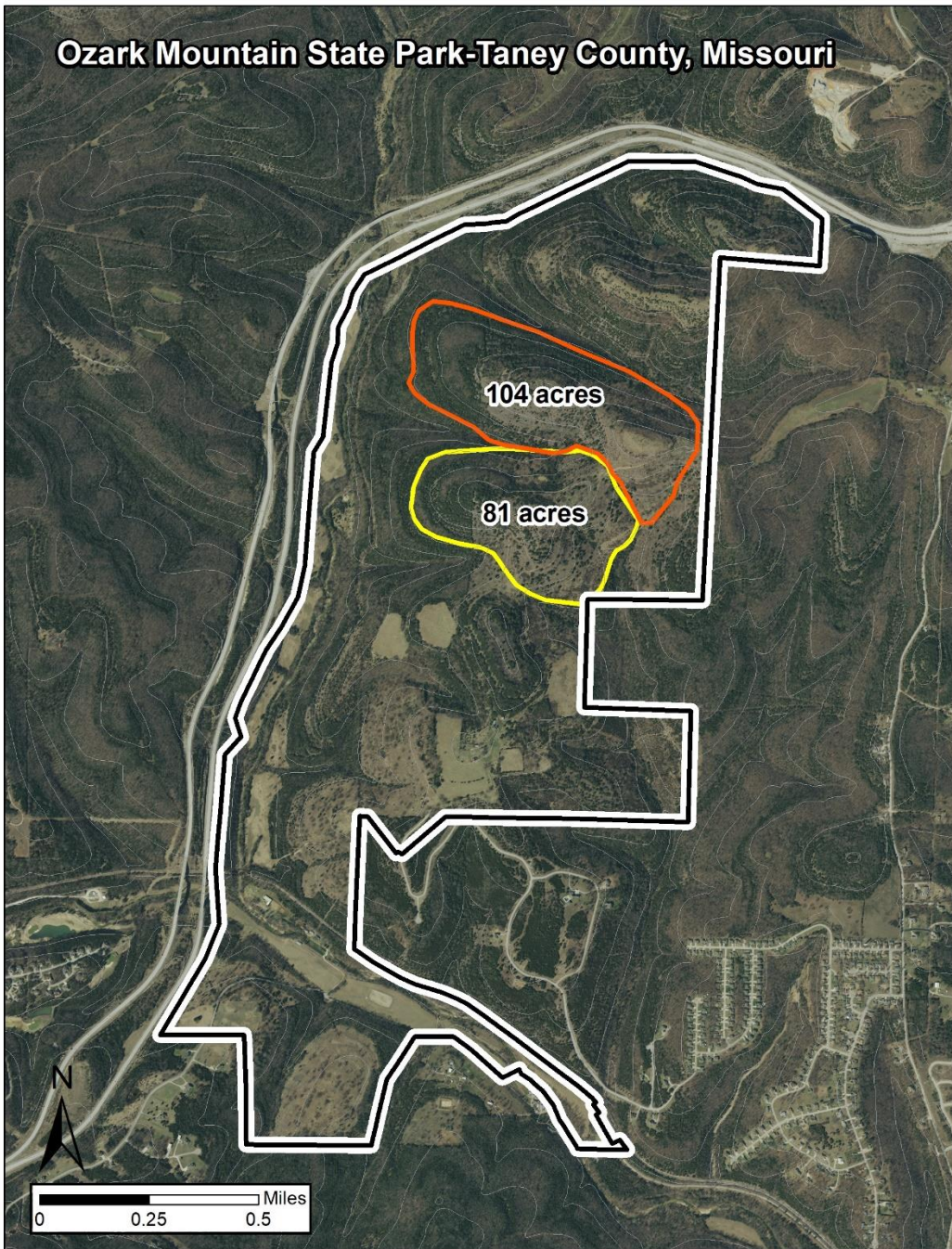
“protect and improve quality and aquatic resources in Roark Creek, by preserving a signature natural glade-woodland environment in its watershed”

*Resource Management Plan ... **being written now***

- *glade clearing*
- *reducing exotic weeds*
- *prescribed burns*
- *water studies and monitoring*
- *volunteer stream monitoring
and glade restoration*



Ozark Mountain State Park-Taney County, Missouri



Restoration begins this fall ... !!

- *Americorps NCCC crew grant – they start in November*
- *Bids pending – contract Prescribed burn*

Ken McCarty

Natural Resource Management Program Director

573-751-8660

Ken.McCarty@dnr.mo.gov

Cultural Resources Research at Ozark Mountain State Park

Amanda Pesce, Archaeologist



Methodology

1. Archival Research Including:
 - Archaeological Survey Reports
 - BLM GLO Patents
 - *The Taney County Republican*
 - 1930s Plat Maps
 - 1982 Atlas of Taney County
 - *White River Valley Historical Quarterly* and other online accounts of Garber Residents or their descendants

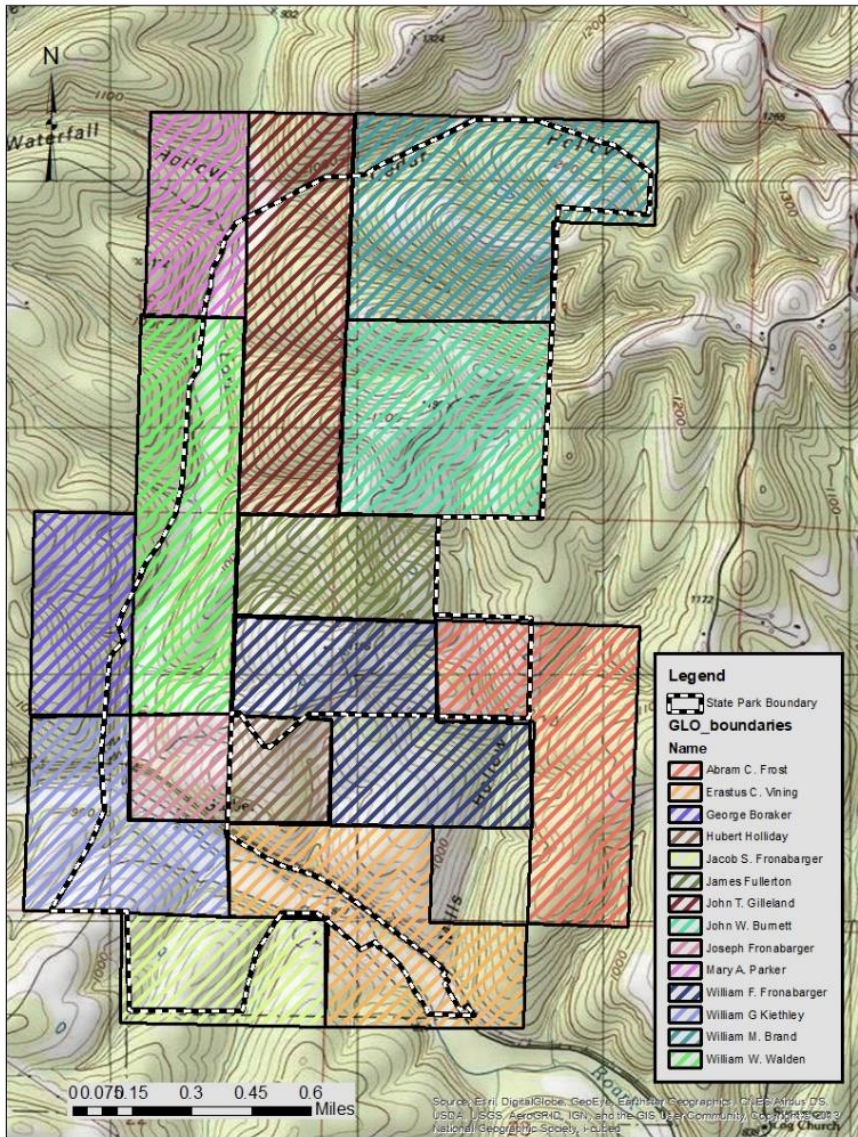
2. Creation of Maps to establish boundaries within which certain activities may have occurred.
3. Field confirmation as necessary



Homestead adjacent to Roark Creek built approximately 1924



Original Homesteaders



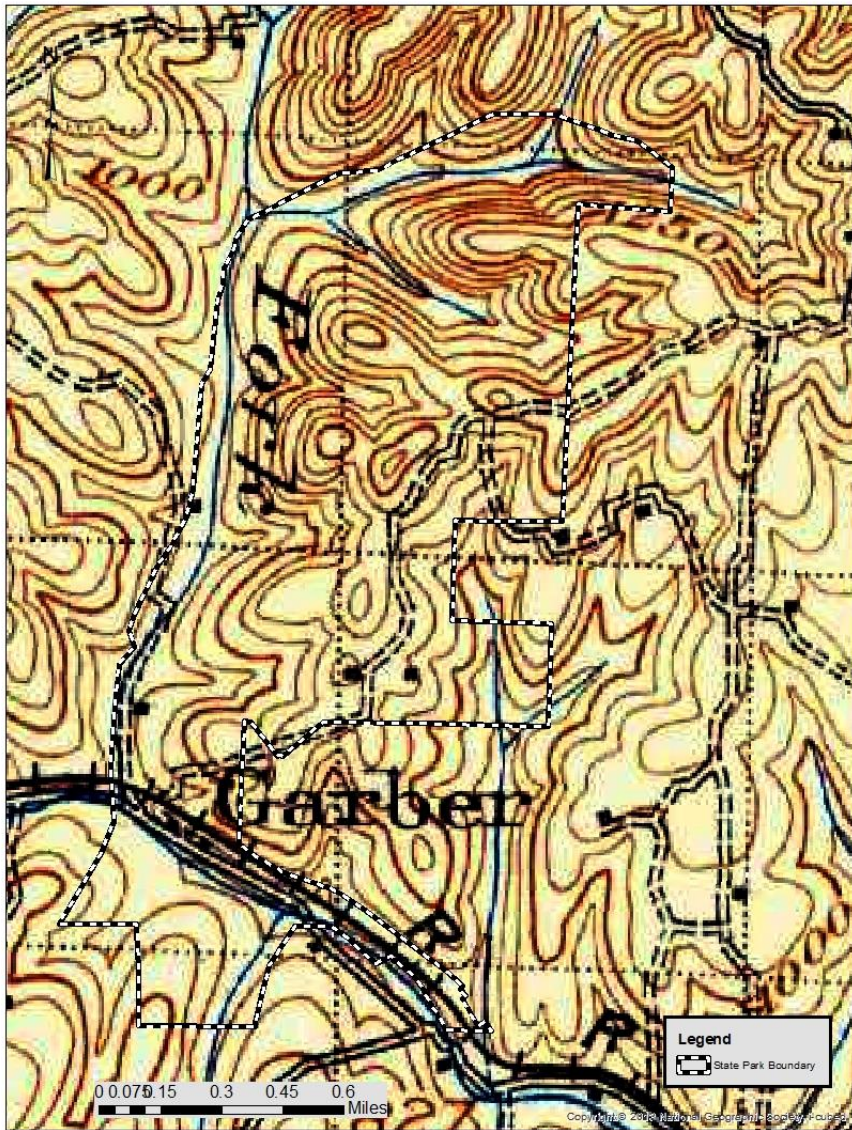
Maps

1873-1910

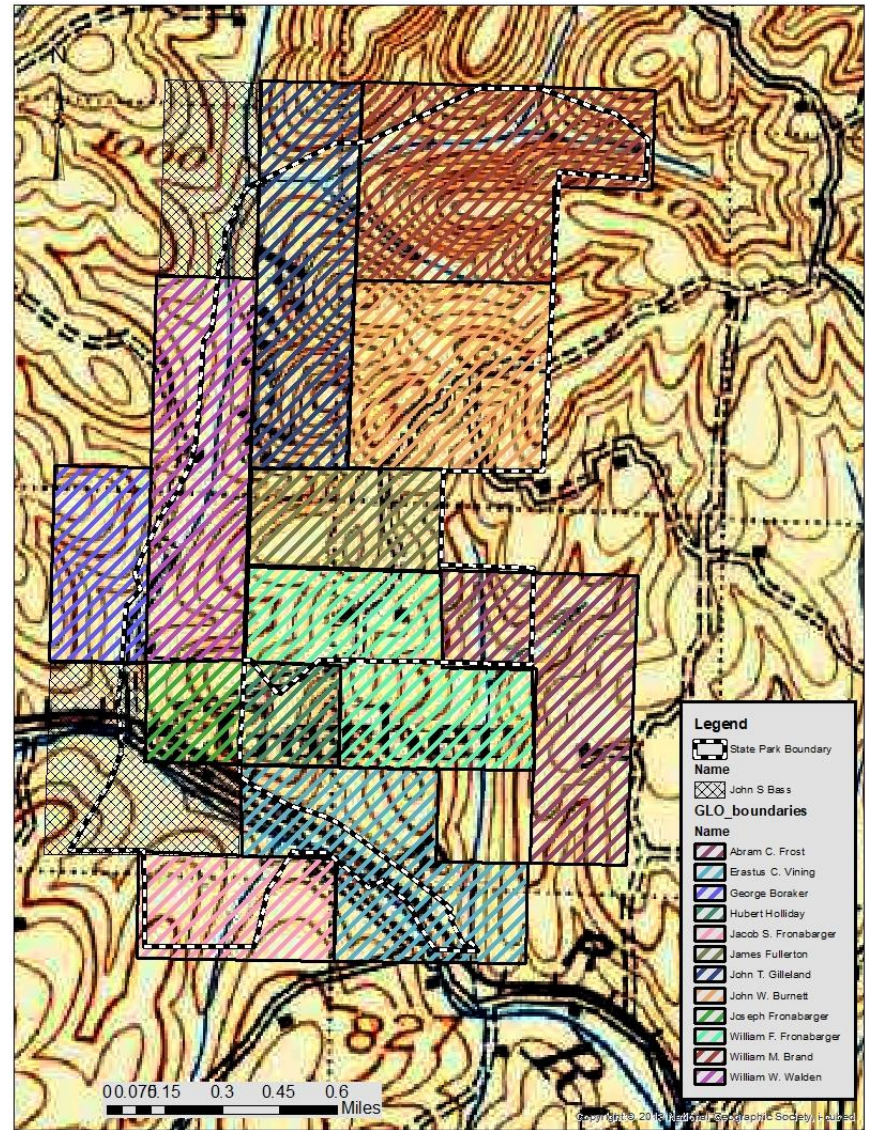
- The earliest homesteaders:
 - William G Kiethley (1873)
 - Mary A Parker (1879)
 - Within 5 years, Mrs. Parker transferred her land to the Keithley family
- The last homesteader: John T. Gilleland
- The most popular year to homestead in Garber was 1903, during which 4 land claims were established.



Garber - 1907



Garber - 1907



Garber History Highlights

Joel Garber:

- Patent in 1895
- Moved to Colorado in 1904
- Did not own land within State Park Boundaries

Town moved three times.

- Final location (approximately 1904) not within State Park Boundaries

Life in Garber:

- Railroad completed in 1905
- Primary Crops – Fruit trees (peach and pear), tomatoes, strawberries, alfalfa, potatoes, corn, wheat, and lumber.
- Primary Livestock: goats (for mohair), cattle, pigs and chickens
 - Free Range

Remaining Structures and Foundations



Archaeology at Ozark Mountain State Park

Limited Survey

9 Recorded Prehistoric Sites

- Date as far back as the Archaic Period (6000 B.C.)
- As recent the Late Prehistoric Period (A.D. 1450-1650).

Previous Archaeological Survey of the “Bass House” - 1993

- Chronological ownership with some data missing
- Described multiple stages of construction/modification
- Speculation as to why Frank Bush built the home
- Root Cellar
- Smokehouse
- Outhouse
- Chicken Coops
- Well – 1950s modified into well house
- 2 Barns



**Thanks to JK Ross and his weekly submissions to The Taney County Republican,
we now know that:**

- Frank Bush built the home in 1913 after purchasing the land from C.O. Bass (Charlie) and lived there for less than a year
- Charlie bought back the property from Frank and remodeled the home in 1914.
- January of 1915 He built a new barn and drilled the well near the home
- Aug 1916 – CO Bass builds a concrete cellar
- June 1917 – Charlie Bass is cutting his rye and decides he needs to build more barn room
- CO Bass Vacated the home in 1919



Fronabarger/Garber School House



- ❖ WF Fronabarger donated the land for the school house
- ❖ January 1903 – School commences in Garber (the most popular year for homestead patents)
- ❖ Called the “Fronabarger School District” as late as 1907
- ❖ 1909 – Land sold to Calvin Jones
- ❖ 1915 - Leonard Jones married Pearl Fronabarger and were said to live near the school



Fronabarger/Garber School House



Condition of the School and Interpretation

Historical Events:

- ❖ Spelling Bees
- ❖ Literacy Society Meetings
- ❖ Sunday School (since 1914)
- ❖ Pie Suppers
- ❖ Kandy Kangaroo Kourt



Contact Information

Feel free to contact me regarding any information you would like to share about the history of Ozark Mountain State Park:

Amanda Pesce

Amanda.pesce@dnr.mo.gov

573-522-2733



Conceptual Development Plan

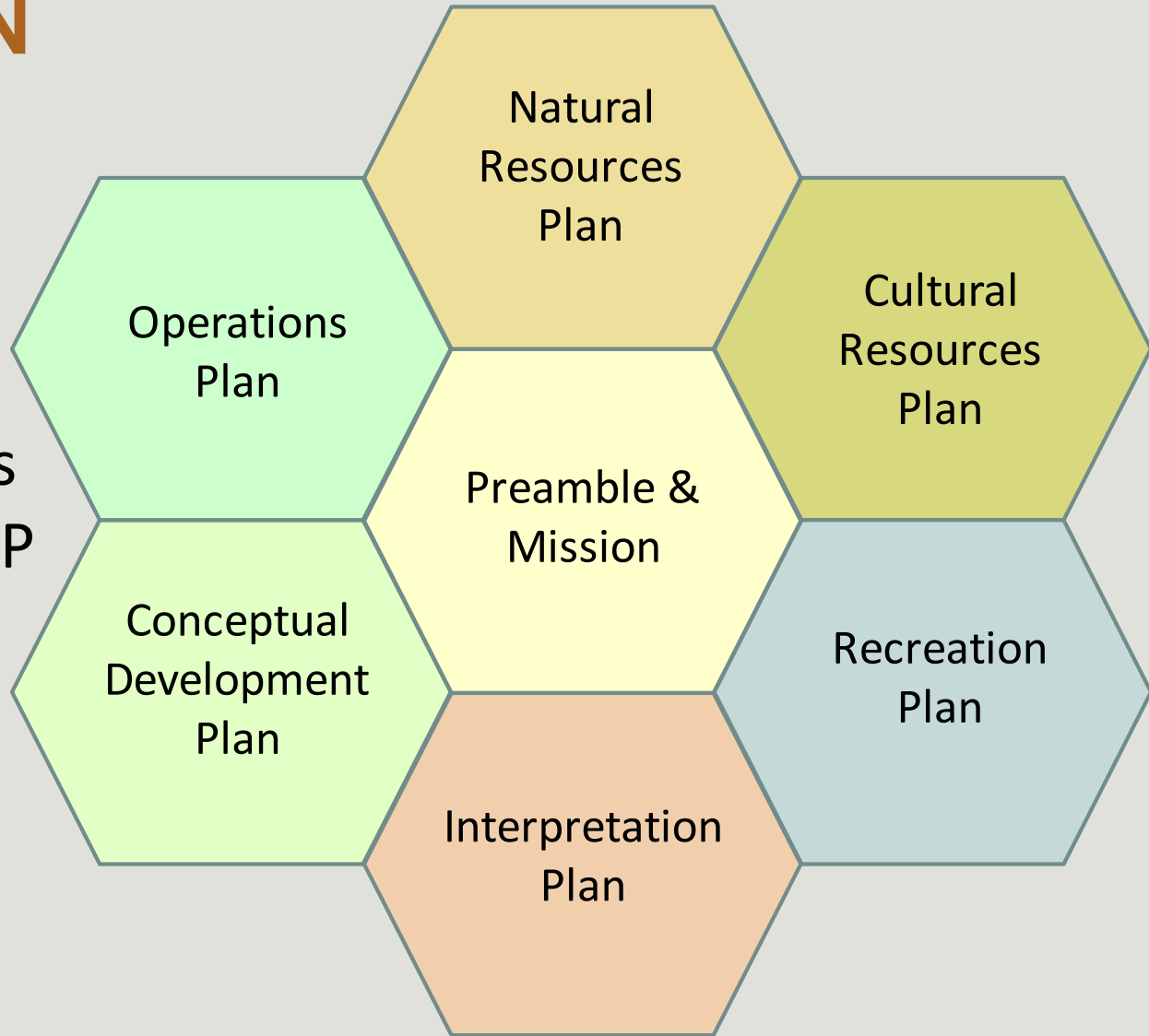
CARRIE WOLKEN

PLANNING SECTION CHIEF

CARRIE.WOLKEN@DNR.MO.GOV

GENERAL MANAGEMENT PLAN

Conceptual Development Plan is one piece of the GMP



CONCEPTUAL DEVELOPMENT PLAN

SIGNIFICANCE

- Long-term plan (20 Year)
- Produced by a team of specialists
- Represents the views of various disciplines, stakeholder interests and public input

PURPOSE

- Sets achievable goals
- 20 Year outlook
- Addresses public use
- Facility renovation and development
- Natural & Cultural resource protection
- Interpretation & Recreation Uses

CONCEPTUAL DEVELOPMENT PLAN

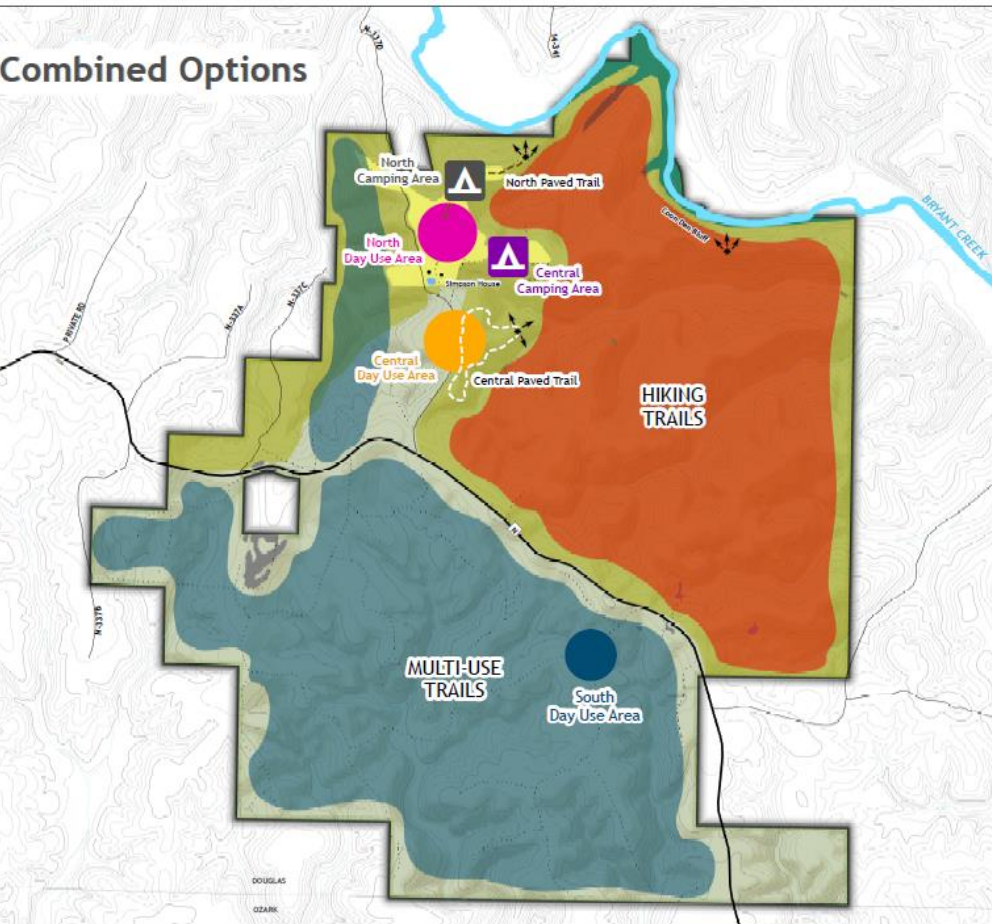
PROCESS

- Team Formation
- On-Site Meeting
- Mission Statement & Preamble Creation
- Data Collection and Public Input
- Plan Formation with alternatives & maps
- Plan Review – executive staff, division comments
- Plan Approval – share with public and implement
- Amendable as Needed

CONCEPTUAL DEVELOPMENT PLAN

CDP's TYPICALLY INCLUDE

- Mission Statement
- Introduction
- Development Goals and Objectives
- Planning and Research Goals
- Contextual Planning Information
- Possible Acquisition Units
- Accompanying Map with Use Diagram (“Bubbles”)



OZARK MOUNTAIN STATE PARK

PROCESS

- Team Formation
- On-Site Meeting
- Mission Statement & Preamble Creation
- *Data Collection and Public Input*
- Plan Formation with alternatives & maps
- Plan Review – executive staff, division comments
- Plan Approval – share with public and implement
- Amendable as Needed

Questions??

Carrie Wolken

DNR-MO State Parks

Planning & Development Program

(573) 751-5382

Carrie.Wolken@dnr.mo.gov